



Harewood Hill, Epping, CM16

BUTLER & STAG



**Guide Price £925.000 -
£950.000**
**A well presented semi-
detached family house
in a premier location
with a beautifully
maintained garden.**



Freehold

- Semi-Detached Family Home
- Two Receptions/Kitchen Area
- Loft Conversion/Off Street Parking
- Chain Free
- Five/Six Bedrooms/Two Bathrooms
- Utility Room/Downstairs WC
- Security Side Gate/CCTV

This delightful character house has been well maintained and cared for by the current owners and is situated in the highly sought after village location of Theydon Bois.

Accommodation is arranged over three floors comprising a large lounge, a separate dining room with patio doors opening onto the rear garden, a kitchen breakfast area, utility room/downstairs WC, an integral garage completes the ground floor.

The first floor hosts five bedrooms, four of which are doubles, and a family bathroom. The second floor has a spacious bedroom with a separate shower room, and ample amounts of storage.

The secluded rear garden extends to 108' approx. with a south west facing aspect, the front garden has a paved driveway perfect for off street parking for two vehicles.

Harewood Hill is a tree lined residential turning in this ever popular village. Local amenities include a good range of shops, pubs, restaurants and leisure facilities. There are several well regarded state and private schools within easy reach and good transport links into London. Theydon Bois station (Central Line) is a short walk and provides swift access into central London. Offered Chain Free



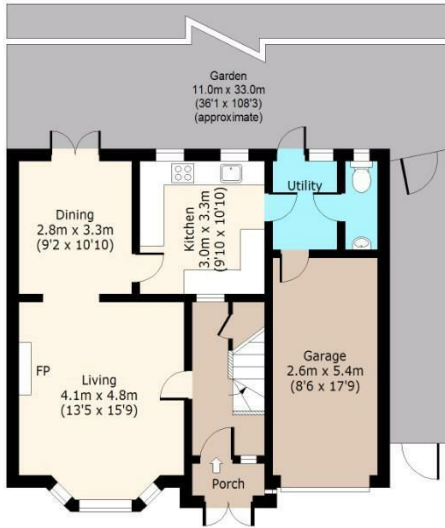




Harewood Hill

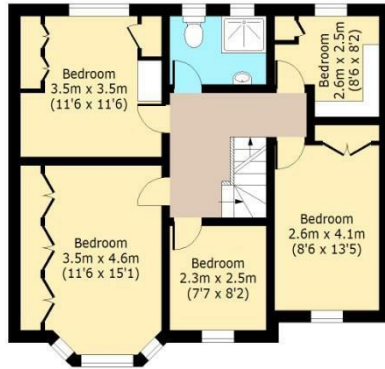
Ground Floor

Approx. 70 Sq. meters (753 Sq. feet)
(Including Garage)



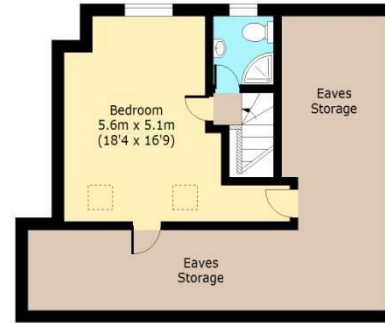
First Floor

Approx. 69 Sq. meters (743 Sq. feet)



Second Floor

Approx. 26 Sq. meters (280 Sq. feet)
(Excluding Eaves Storage)



Total area(Including Eaves Storage/Garage): approx. 196 Sq. meters (2110 Sq. feet)
Total area(Excluding Eaves Storage/Garage): approx. 151 Sq. meters (1625 Sq. feet)
For illustration purposes only - not to scale
www.ipaplus.com

BUTLER & STAG

☎ 01992 667666

🏠 4 Forest Drive, Theydon Bois, Essex, CM16 7EY

✉ theydon@butlerandstag.com

IMPORTANT NOTICE - These particulars have been prepared in good faith and they are not intended to constitute part of an offer or contract. We have not performed a structural survey on this property and the services, appliances and specific fittings have not been tested. All photographs, measurements, floor plans and distances referred to are given as a guide and should not be relied upon.

www.butlerandstag.uk